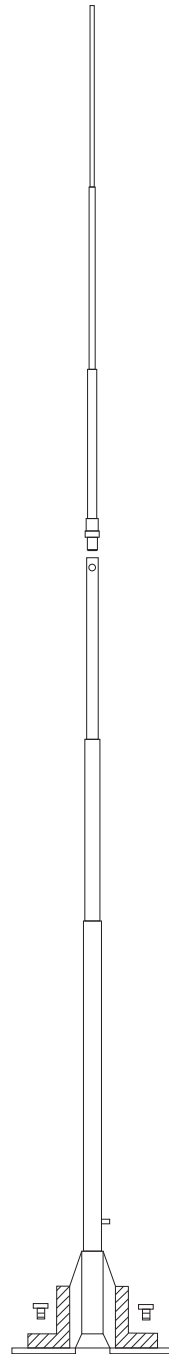


REV	MODIFICATIONS	DRAWN BY	CHECKED BY	DATE
A	CREATION	GI	GI	1/23/2011



Colour	Standard is White. Optional other colours.
HF Marine Band	2-30 MHz
Length	7.0 metres (23 ft)
Pattern	Omnidirectional
Polarisation	Vertical
Frequency Range	Pretuned to 4.6 MHz or, unloaded, 1.6-30 MHz with suitable ATU
Wind Loading	8.8 kg at 100 km/h (19.5 lbs at 60 mph) 20 kg at 150 km/h (44 lbs at 94 mph) Antenna survival : 250 km/h (156 mph)
Power Capability	1.2 kW PEP for unloaded top sections, 800 w PEP for 4.6 MHz top sections
Base Insulator	>25 kV insulator flash over voltage (test conditions: antenna dry)
Radiato	Total radiating surface: 5,500 sq cm (5.9 sq ft)
Mounting	Cast aluminium alloy base flange and support tube with integral base insulator and O ring
Base Mount Finish	Epoxy based enamel
Connection	M6 stainless steel stud and lock nuts direct to antenna
Packed Weight	9kg (19.8 lbs) Antenna and base unpacked 7 kg (15.4 lbs)

UNLESS OTHERWISE SPECIFIED DIMENSIONS : mm ANGLES : d.		NEARSON INC.			
CUSTOMER N°	FILE N°	TITLE : Higher power capability base mounted marine whip antenna for large vessels			
		SIZE A4	NMO-01-0020		
		SCALE : N.D.		<table border="1"> <tr> <td>REV A</td> <td>Doc.</td> </tr> <tr> <td colspan="2" style="text-align: center;">SHEET 1 of 1</td> </tr> </table>	REV A
REV A	Doc.				
SHEET 1 of 1					