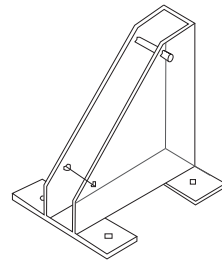
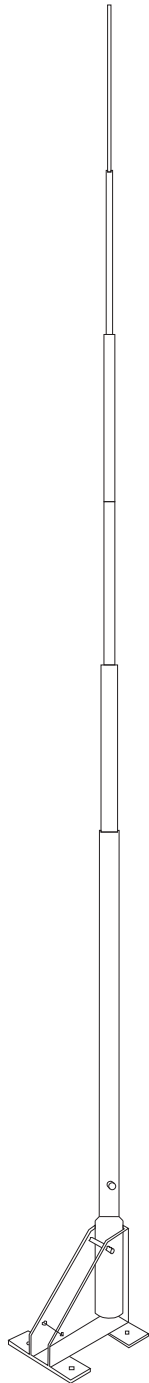


REV	MODIFICATIONS	DRAWN BY	CHECKED BY	DATE
A	CREATION	GI	GI	1/23/2011



Colour Standard is Grey
 HF Marine Band 1.6-30 MHz
 Length 7.0 metres (23 ft)
 Pattern Omnidirectional
 Polarisation Vertical or horizontal (high angle)
 Frequency Range Pre-tuned to 4.6 MHz or, unloaded, 1.6-30 MHz with suitable ATU
 Wind Loading 8.8 kg at 100 km/h (19.5 lbs at 60 mph); 20 kg at 150 km/h (44 lbs at 94 mph). Antenna survival : 250 km/h (156 mph)
 Power Capability 800W PEP unloaded top sections; 500 w PEP 4.6 MHz top sections
 Radiator Total radiating surface: 5,500 sq cm (5.9 sq ft)
 Mounting Aluminium alloy angled base support which may be bolted directly to the deck 250mm x 60mm x 250mm high (9.8 x 2.4 x 9.8 in) (supplied) and 4 x 10mm 3/8 in) bolts (not supplied).
 Base Mount Finish Epoxy based enamel
 Connection 6mm Whitworth stainless steel stud and lock nuts direct to side of antenna
 Packed Weight Antenna: 8.5kg (18.7lbs); Mount 2kg (4.4lbs)

UNLESS OTHERWISE SPECIFIED DIMENSIONS : mm ANGLES : d.		NEARSON INC.			
CUSTOMER N°	FILE N°	TITLE : High power HF antenna for vessels			
		SIZE A4	NMO-01-0022		
		SCALE : N.D.		<table border="1"> <tr> <td>REV A</td> <td>Doc.</td> </tr> <tr> <td>Prod.</td> <td></td> </tr> </table>	REV A
REV A	Doc.				
Prod.					
		SHEET 1 of 1			